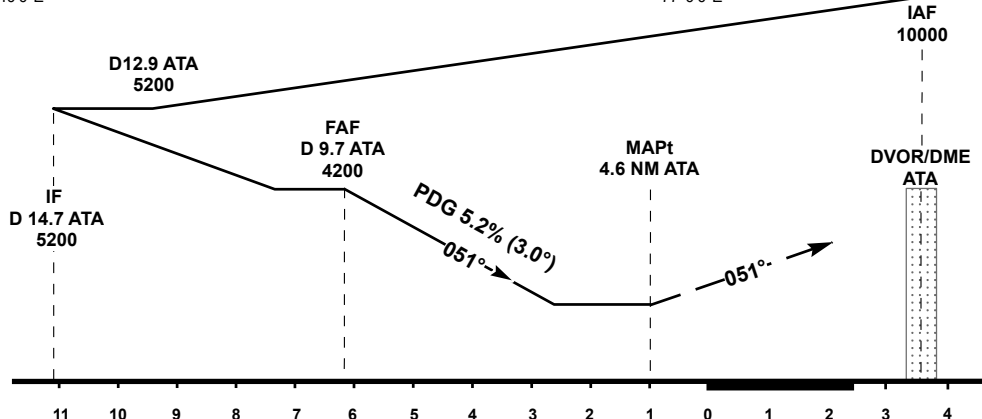
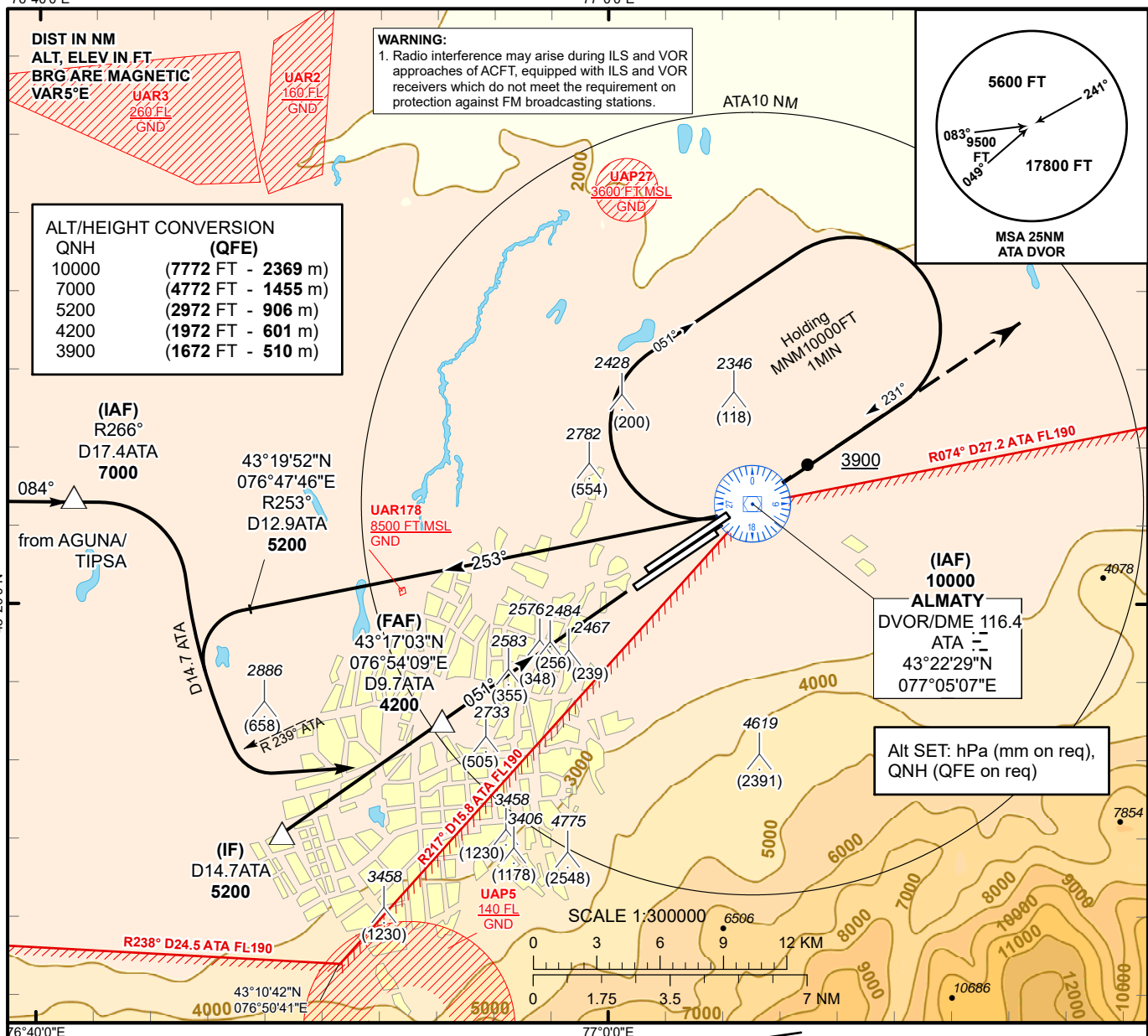


INSTRUMENT
APPROACH
CHART - ICAO

AERODROME ELEV 2238 FT
HEIGHTS RELATED TO
THR RWY 05R - ELEV 2228 FT

ALMATY APPROACH 118.3
ALMATY RADAR 126.8
ALMATY TOWER 119.4
ALMATY ATIS (EN) 129.8
ALMATY ATIS (RU) 135.1

ALMATY
VOR/DME
RWY 05R



MISSED APPROACH
Climb on track 051° to 5200.
After passing 3900 radar vectoring
will be provided.
RADIO FAILURE:
In case of RCF climb on track 051°
to 5200 FT, turn LEFT to ATA,
but not earlier than 6.5NM ATA.
Climb to 10000FT (not below) to ATA
and join to holding pattern.

Aircraft Category		A	B	C	D	DIST to THR	NM	6.1	5	4	3
Straight-in Approach OCA/H						DME ATA	NM	9.7	8.6	7.6	6.6
	VOR/DME	3150 (920)	3150 (920)	3150 (920)	3150 (920)	ALTITUDE	FT	4200	3869	3551	3232
						HEIGHT	FT	1972	1641	1323	1004

Aerodrome Operating Minima MDH ft x RVR(CMV)	VOR/DME												
						GS	Kt	80	100	120	140	160	180
						Desc.Rate (5.2%)	ft/min	420	530	630	740	840	950
						FAF-MAPt (5.1 NM)	min:sec	3:50	3:04	2:33	2:11	1:55	1:42

ALMATY
VOR/DME

AERONAUTICAL DATA TABULATION

VOR/DME approach to RWY05 R from ATA DVOR/DME	
Fix/point	Coordinates
ATA DVOR/DME	43° 22' 29.4"N 077° 05' 07.0"E
(FAF) ATA D9.7	43° 17' 03.3"N 076° 54' 08.9"E
(IF) ATA 14.7	43° 14' 13.5"N 076° 48' 27.8"E
R 266° D17.4 ATA (IAF)	43° 22' 43.6"N 076° 41' 15.3"E
THR RWY 05 R	43° 20' 28.46"N 077° 01' 02.85"E
Final approach descent angle is 3°	